

NEW PRODUCTS 2007



BERETTA

500 YEARS. ONE PASSION.

# THE UPLAND SPORTSMAN



Whether it's aspens and alders that hide the darting flight of woodcock and grouse — or the open grass plains of pheasant and quail — you are in your element. The crisp fall morning air heightens your senses as the sun warms your face. You once again marvel at the gracefulness of your trusty German Shorthair at rock-solid point. Nature, harmony, and heritage are the hallmarks of the Beretta Upland Sportsman — a superb collection of fine shotguns, upland apparel, and accessories.

## NEW BODY MAPPING TECHNOLOGY

BREATHABILITY, COMFORT, WARMTH AND FIT, PRECISELY WHERE THEY ARE NEEDED MOST.

Performance and comfort are at the core of Beretta outdoor clothing and gear. Like this new jacket featuring GORE™ Comfort Mapping Technology that improves your comfort by design, strategically using different GORE-TEX® fabrics in specific locations in the garment. Three layers of GORE-TEX® Soft Shell—including Beretta's exclusive Gardone Waffle—provide performance where you need it most.



- A** Detachable and adjustable hood made in Cordura® and Paclite® stores inside the jacket
- B** Top side and sleeves made in Cordura® to guarantee high abrasion resistance
- C** Armpit and trunk in Gore-Tex® Paclite® for breathability and lightness
- D** Adjustable cuff
- E** Bottom drawstring
- F** Waterproof zip with easy pull
- G** Two generous front pockets with zip and easy pull

Available in (COLORS?)

# THE UPLAND SPORTSMAN

WE NOT ONLY IMPROVED ITS PERFORMANCE, WE IMPROVED ITS LOOKS.  
THE FASTEST SEMIAUTOMATIC ON THE MARKET.

Beretta is introducing an enhanced version of the award-winning AL391 Urika shotgun that has sold over 1.5 million units worldwide since its introduction. The new Urika 2 has several new and notable features which will make it the fastest, easiest, and smoothest handling semiautomatic on the market today.



J39TA18 AL391 URIKA 2 X-TRA GRAIN 12/28"



J39TB18 AL391 URIKA 2 GOLD 12/28"

## THE URIKA 2 FOR THE UPLAND SPORTSMAN

For Upland hunters, this new product comes in a standard model that features the new X-TRA Grain wood enhancement treatment – and for the first time on the base Urika – tasteful fine-line scroll engraving. The upgraded Urika 2 Gold features a higher grade of select oil-finished wood stock and fore end. The upgraded engraving scheme features gold-filled game bird inlays.



## AMERICAN WATERFOWLER

For Waterfowl hunters, the Urika 2 will also be available both with and with out the Kick-Off system– the most advanced recoil reduction system on the market. The Kick-Off option and Non Kick-Off option will be available in Synthetic, RealTree Advantage Max-4, and the new RealTree AP.



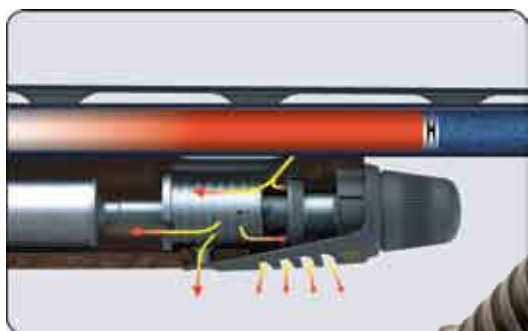
## VICTORY SHOOTER

Competition clay target shooters will enjoy a full range of Urika 2 models. The original Urika became the semi-automatic of choice for competitive shooters due to its reliability, quality, and ease of maintenance. The Urika 2 takes these key features that made its predecessor successful and takes them to the next level of innovation and performance. The full range will include Sporting and Parallel Target models in both standard models with X-TRA Grain wood enhancement treatment and enhanced Gold versions with select oil-finished walnut and a floral motif engraving.

## KICK OFF TECHNOLOGY (LIMITED MODELS)

An outstanding Beretta patent that far exceeds the claimed performance of the competition in similar systems of recoil reduction. This technology has been carried over from the success of the Xtrema2. It is a true hydraulic recoil reduction borrowed from the proven automotive technology, which has absolutely nothing to do with the simple rubber pads of the competition that pretend to be recoil absorbers .

# THE UPLAND SPORTSMAN



## GAS OPERATION

### THE BERETTA GAS SYSTEM IS TWICE AS FAST AS ANY OTHER OPERATING SYSTEM.

The gas system has been improved by the addition of a spinning and self-cleaning action. As gas pressure is fed into the gas cylinder, a series of expandable fingers on the piston expand outwardly to clean the gas cylinder as the action cycles.

Additionally, the gas piston is imparted with a spinning motion and "scraper teeth" to ensure carbon deposits are thoroughly dislodged and removed from the gas system. This improved cleaning action greatly contributes to enhanced reliability and longer functioning shooting periods between cleaning.



## X-TRA GRAIN

Also, new is Beretta's proprietary X-TRA GRAIN wood enhancement treatment on standard models. This wood surface enhancement treatment, applied to the walnut, improves the wood grain on the stock and fore-end. This process is obtained from a new technology that highlights the color contrast of the wood resulting in a beautiful and rich pattern.

## URIKA2

MODEL	CODE	GAUGE	BARREL	CHOKE	MSRP
AL391 URIKA2 X-TRA GRAIN	J39TA16	12	26"	OBF	\$1,250
AL391 URIKA2 X-TRA GRAIN	J39TA18	12	28"	OBF	\$1,250
AL391 URIKA2 X-TRA GRAIN	J39TA26	20	26"	MCF	\$1,250
AL391 URIKA2 X-TRA GRAIN	J39TA28	20	28"	MCF	\$1,250
AL391 URIKA2 YOUTH X-TRA GRAIN	J39TC24	20	24"	MCF	\$1,400
AL391 URIKA2 GOLD	J39TB18	12	28"	OBF	\$1,400
AL391 URIKA2 GOLD	J39TB26	20	26"	MCF	\$1,250
AL391 URIKA2 SYNTHETIC KICK-OFF	J39TD18	12	28"	OBF	\$1,250
AL391 URIKA CAMO ADVANTAGE MAX-4 KICK-OFF	J39TR16	12	28"	OBF	\$1,350
AL391 URIKA CAMO REALTREE AP KICK-OFF	J39TT18	12	26"	OBF	\$1,350
AL391 URIKA2 SYNTHETIC	J39TU18	12	28"	OBF	\$875
AL391 URIKA CAMO ADVANTAGE MAX-4	J39TV16	12	26"	OBF	\$975
AL391 URIKA CAMO REALTREE AP	J39TJ18	12	28"	OBS	\$975
AL391 URIKA2 SPORTING X-TRA GRAIN	J39TJ10	12	30"	OBS	\$1,300
AL391 URIKA2 SPORTING X-TRA GRAIN	J39TJ28	20	28"	MCS	\$1,300
AL391 URIKA2 SPORTING X-TRA GRAIN	J39TJ20	20	30"	MCS	\$1,300
AL391 URIKA2 GOLD SPORTING	J39TK18	12	28"	OBS	\$1,300
AL391 URIKA2 GOLD SPORTING	J39TK10	12	30"	OBS	\$1,650
AL391 URIKA2 PARALLEL TARGET RL X-TRA GRAIN	J39TM18	12	28"	OBS	\$1,300
AL391 URIKA2 PARALLEL TARGET RL X-TRA GRAIN	J39TM10	12	30"	OBS	\$1,300
AL391 URIKA2 PARALLEL TARGET SL X-TRA GRAIN	J39TN10	12	30"	OBS	\$1,300
AL391 URIKA2 PARALLEL TARGET SL X-TRA GRAIN	J39TN12	12	32"	OBS	\$1,300
AL391 URIKA2 GOLD PARALLEL TARGET SL	J39TP12	12	32"	OBS	\$1,650
AL391 URIKA2 GOLD PARALLEL TARGET SL	J39TP10	12	30"	OBS	\$1,650

# 2007 NEW PRODUCTS FROM BERETTA

Welcome to Beretta's 2007 New Products brochure. In these pages, you will find the very latest additions to our comprehensive line of products to help you meet your customers' sporting, leisure and defense needs. From our new 682 Gold E Trap with a fully adjustable unsingle rib to our new proprietary X-Tra Grain wood enhancement treatment to our Px4 Storm Sub-Compact pistol, you will find that Beretta is still built on a foundation of absolute reliability, master craftsmanship, and a drive for innovation.

For 500 years Beretta has been driven by passion, a relentless devotion to perfection, to precision, to the finest craftsmanship imaginable. Now, more than ever, we are committed to bringing you an all-inclusive collection of firearms, apparel, and accessories — all designed to compliment each other in the kind of balance only Beretta could achieve. We believe this approach suits the needs and desires of your customers, whatever their shooting and outdoor passions may be.



## COLLECTIONS:

UPLAND SPORTSMAN .....	1
AMERICAN WATERFOWLER .....	5
AMERICAN BIG GAME HUNTER.....	7
VICTORY SHOOTER .....	11
AMERICAN PISTOL SHOOTER .....	14
WESTERN SHOOTER .....	17
1526 CLIENT .....	20

# THE UPLAND SPORTSMAN

CARRY WITH PRIDE FROM ENTRY LEVEL TO TOP-OF-THE LINE.  
A TRADITION OF PRESTIGE AND PERFORMANCE.



## SILVER PIGEON S

This shotgun represents the entry-level into the Silver Pigeon family. With the same level of mechanical refinement as our higher-end shotguns, the Silver Pigeon S sports an attractive yet cost-effective finishing scheme. The tasteful scroll and floral engraving pattern is executed on a satin nickel-alloy finished receiver that is exceptionally resistant to wear and corrosion. To complete the gauge offerings — new for 2006 — is a .410 bore shotgun built on a smaller receiver that is proportionally scaled to the barrels.



## SILVER PIGEON V

This fine shotgun is the pinnacle of the Silver Pigeon family. The Silver Pigeon V is stocked in richly figured walnut and sealed with a smooth oil finish that can be easily maintained. The receiver is treated with Beretta's proprietary process that imparts a classic Color-Case hardened finish that ensures metallurgical integrity and a distortion-free part. The receiver is further adorned with gold-filled inlays of game birds and a Beretta gold medallion underneath. To complete the gauge offerings — new for 2006, is a .410 bore shotgun built on a smaller receiver that is proportionally scaled to the barrels. True traditionalists will appreciate the new straight English grip stock models in 20, 28, and .410 bore.

## SILVER PIGEON S

MODEL	CODE	GAUGE	BARREL	CHOKE	MSRP
SILVER PIGEON S	J686S10	12	26"	MCF	\$2,150
SILVER PIGEON S	J686S12	12	28"	MCF	\$2,150
SILVER PIGEON S	J686S20	20	28"	MCF	\$2,150
SILVER PIGEON S	J686S22	20	28"	MCF	\$2,150
SILVER PIGEON S COMBO	J686S30	20/28	26"/28"	MCF	\$2,150
SILVER PIGEON S	J686S41	28	26"	MCF	\$2,150
SILVER PIGEON S	J686S43	28	28"	MCF	\$2,150
SILVER PIGEON S	J686S52	.410	28"	MCF	\$2,150

## SILVER PIGEON V

MODEL	CODE	GAUGE	BARREL	CHOKE	MSRP
687 SILVER PIGEON V	J687IN6	12	26"	MCF	\$3,575
687 SILVER PIGEON V	687IN8	12	28"	MCF	\$3,575
687 SILVER PIGEON V	J687IQ6	20	26"	MCF	\$3,575
687 SILVER PIGEON V	J687IQ8	20	28"	MCF	\$3,575
687 SILVER PIGEON V (ENGLISH STOCK)	J687IQ8S	20	28"	MCF	\$3,575
687 SILVER PIGEON V	J687IR6	28	26"	MCF	\$3,575
687 SILVER PIGEON V	J687IR8	28	28"	MCF	\$3,575
687 SILVER PIGEON V (ENGLISH STOCK)	J687IR8S	28	28"	MCF	\$3,575
687 SILVER PIGEON V	J687IS8	.410	28"	MCF	\$3,575
687 SILVER PIGEON V (ENGLISH STOCK)	J687IS8S	.410	28"	MCF	\$3,575



\*MCF = MOBILE CHOKE FIELD F-JM-M-IC-C CHOKE TUBES.

# THE AMERICAN WATERFOWLER



Opening day. These are time honored traditions mixed with today's technology and innovation. As a Beretta American Waterfowler, these are your realities. The feel of your favorite camo jacket brings back memories of satisfying hunts past. Your waders still wear last year's mud as a badge of honor. As you ready for the day, you gather shells, decoys, hot coffee — and your shotgun. The confidence built in your Beretta gear, with 500 years of technology refinement, means that nothing will ruin this day. The Beretta American Waterfowler collection begins with the Xtrema2 shotgun, apparel, and Xtrema Gear and accessories.

GAME BAG  
JA154A



**Xtrema**  
GEAR

BIRD CARRIER  
JA119A



BLIND BAG  
JA152A



FIELD BAG  
JA153A



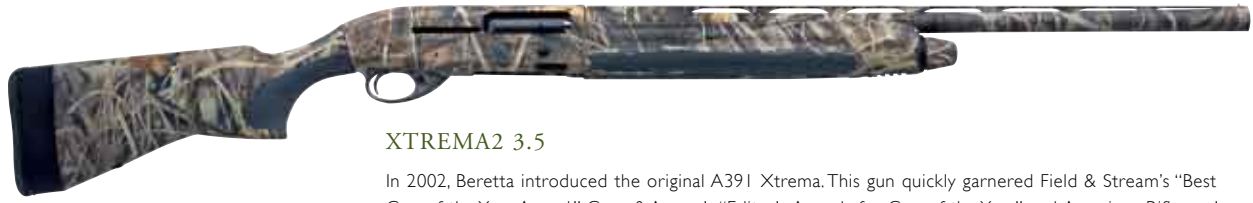
SHOTGUN CASE  
JA150A

## BUILT TO TAKE WHAT NATURE DISHES UP,

Xtrema Gear bags are designed to be the best field gear available. Sealed on the outside to keep the insides dry, the brushed, 800-denier polyester fabric is coated with polyurethane and RF welded together to be tough, quiet, and waterproof. Unique extended top with full-width zippers allow for easy access for the largest of hands. Designed to be the best field bags on the planet today, every pocket, every strap is there for a purpose. Every zipper is sealed, not sewn, with a stormproof urethane coating. The cloth is soft and quiet in the field and will not get stiff and brittle like vinyl. Simply hose down to clean.

# THE AMERICAN WATERFOWLER

WHEN WE DESIGNED A GUN FOR THE MOST EXTREME ENVIRONMENTS,  
WE WERE SURE TO WIN SOME EXTREME AWARDS.



## Xtrema2

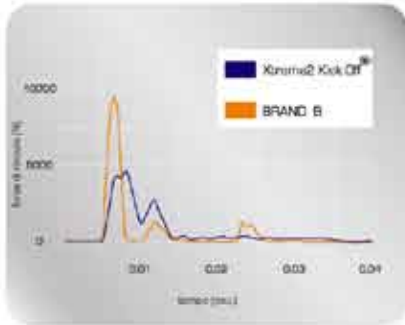
### XTREMA2 3.5

In 2002, Beretta introduced the original A391 Xtrema. This gun quickly garnered Field & Stream's "Best Gun of the Year Award," Guns & Ammo's "Editor's Awards for Gun of the Year," and American Rifleman's "Bull's Eye Award." In the relentless pursuit of excellence, our engineers have once again set the benchmark for a "do-it-all" shotgun in the form of the new Xtrema2.

This superb auto-loading shotgun was designed and built to reliably function 2 $\frac{3}{4}$ " 1 oz., 3 $\frac{1}{4}$  dram equivalent loads through brutal 3 $\frac{1}{4}$ " magnum loads – interchangeably if you so desire. The Xtrema2 has more recoil reduction features than ANY other shotgun on the planet!

Let's count them:

- 1) Gas operation with recoil reduction that no inertia operated shotgun can ever match. The Beretta gas system is considered to be the best in the world. The gas system is completely self-contained with no loose inertia springs or o-rings to lose while field-stripping.
- 2) Elastomer bolt damper to lessen the impact of the bolt and minimize the recoil signature.
- 3) Beretta's Optima-Bore overbored barrel to minimize recoil and optimize pattern efficiency.
- 4) Beretta's competition-proven spring/mass recoil reducer located in the stock grip (included in standard and KO models). This feature minimizes the recoil felt at the shooter's face and shoulder, in addition to improving acquisition of follow-up shots.
- 5) Beretta's Gel-Tek recoil pad to evenly distribute recoil over the entire surface of the pad.
- 6) Kick-Off Reduction System (on optionally equipped models) that utilizes the proven automotive technology of hydraulic dampening. All together, the Xtrema2 reduces recoil an astounding 44% more than its closest rival!



### KICK-OFF

Optional new Kick-Off reduction system (patent pending) features two hydraulic recoil dampers incorporated into stock "spacer" unit. Tested and proven to reliably operate under the harshest climate extremes.

## XTREMA2

MODEL	CODE	GAUGE	BARREL	CHOKE	MSRP
A391 XTREMA2 SYNTHETIC	J391A26	12	26"	OBF	\$1,100
A391 XTREMA2 SYNTHETIC	J391A28	12	28"	OBF	\$1,100
A391 XTREMA2 CAMO AP	J391J26	12	26"	OBF	\$1,200
A391 XTREMA2 CAMO MAX-4 HD	J391C26	12	26"	OBF	\$1,200
A391 XTREMA2 CAMO MAX-4 HD	J391C28	12	28"	OBF	\$1,200
A391 XTREMA2 SYNTHETIC, RIFLED SLUG	J391G24	12	24"	N/A	\$1,450
A391 XTREMA2 SYNTHETIC KO	J391D26	12	26"	OBF	\$1,500
A391 XTREMA2 SYNTHETIC KO	J391D28	12	28"	OBF	\$1,500
A391 XTREMA2 CAMO AP KO	J391K26	12	26"	OBF	\$1,600
A391 XTREMA2 CAMO MAX-4 HD KO	J391F26	12	26"	OBF	\$1,600
A391 XTREMA2 CAMO MAX-4 HD KO	J391F28	12	28"	OBF	\$1,600
A391 XTREMA2 SYNTHETIC, RIFLED SLUG, KO	J391F24	12	24"	N/A	\$1,600

\*OPTIMA-BORE FIELD: F-IM-M-IC-C CHOKE TUBES



# THE BIG GAME HUNTER



For the American Big Game Hunter, nothing is more important than accuracy and reliability. This combination makes a firearm a precision tool, which is exactly how we view our rifles. And as precision tools, all rifles leaving the factory must be capable of placing five shots within one inch at a hundred yards — period. Also, they must meet Beretta's strictest reliability, durability and safety requirements. All this while still conveying the tradition born from our heritage. This is what you can expect from our collection for the American Big Game Hunter.

## THE SAFARI COLLECTION



KALAHARI  
SAFARI VEST  
GU27



KALAHARI SAFARI JACKET  
GU28



RAZORGRASS  
OVERLAY PANT  
CU10

TESTED TIME AND AGAIN  
BY PROFESSIONAL GUIDES  
AND HUNTERS.

Our extraordinarily functional safari clothing has been put to the test by the sport's most demanding critics to ensure you take to the field equipped with the very best. From the working epaulets and pivot sleeves on the Kahahari Safari Jacket to the snake boot tabs and quick load shell pockets of our Razorgrass Overlay Pant, this clothing is designed to perform.

# THE BIG GAME HUNTER

EVERY SAKO RIFLE LEAVES THE FACTORY USED, TO ASSURE THAT THEY ARE  
OUT-OF-THE-BOX ACCURATE NEW.



## SAKO 85 HUNTER

Controlled-round feeding, silk-smooth bolt-travel movement, adjustable trigger and Total Control magazine-latch technology are only some of the amazing benefits incorporated in the new Sako 85. First, the rifle's stock features the classic lines and the high-grade walnut that premium-rifle owners appreciate. The comb is straight, American-style, while the left side of the stock sports a classic shadow-line cheekpiece reminiscent of the Safari rifles of the days of yore. Then, the barreled action is finished with a nonreflective satin blue. And how does it shoot? As with all Sako rifles, the 85 is tested to shoot 1-inch groups at 100 yards or better.



## SAKO 85 STAINLESS SYNTHETIC

This rifle is a balanced blending of Sako-style performance, tasteful innovation and Italian design. It features a controlled-round feeding all-stainless action, match-grade free-floating hammer-forged barrel, adjustable trigger and detachable magazine with Total Control technology. The synthetic stock incorporates warm-feeling, nonslip rubber inserts. The FinSoft recoil-absorption system dramatically reduces felt recoil, especially in the shooter's cheek. Aesthetically, the Sako 85 Stainless Synthetic is another fruit of world-class Giugiaro designers, organically combining the lines of the stock with those of the barreled action.

### SAKO 85 HUNTER

MODEL	CODE	CALIBER	ACTION	BBL LENGTH	MSRP
SAKO 85 HUNTER	JRS1A12	223 REM	XS	22 <sup>7</sup> / <sub>16</sub> "	\$1,625
SAKO 85 HUNTER	JRS1A14	22-250 REM	S	22 <sup>7</sup> / <sub>16</sub> "	\$1,625
SAKO 85 HUNTER	JRS1A15	243 WIN	S	22 <sup>7</sup> / <sub>16</sub> "	\$1,625
SAKO 85 HUNTER	JRS1A16	308 WIN	S	22 <sup>7</sup> / <sub>16</sub> "	\$1,625
SAKO 85 HUNTER	JRS1A43	338 FEDERAL	S	22 <sup>7</sup> / <sub>16</sub> "	\$1,625
SAKO 85 HUNTER	JRS1A17	25-06 REM	M	22 <sup>7</sup> / <sub>8</sub> "	\$1,625
SAKO 85 HUNTER	JRS1A18	270 WIN	M	22 <sup>7</sup> / <sub>8</sub> "	\$1,625
SAKO 85 HUNTER	JRS1A20	30-06 SPRG	M	22 <sup>7</sup> / <sub>8</sub> "	\$1,625
SAKO 85 HUNTER	JRS1A21	260 REM	S	22 <sup>7</sup> / <sub>16</sub> "	\$1,625
SAKO 85 HUNTER	JRS1A51	6.5X5.5 SWEDISH MAUSER	M	24 <sup>3</sup> / <sub>8</sub> "	\$1,625
SAKO 85 HUNTER	JRS1A40	270 WSM	SM	24 <sup>3</sup> / <sub>8</sub> "	\$1,625
SAKO 85 HUNTER	JRS1A41	300 WSM	SM	24 <sup>3</sup> / <sub>8</sub> "	\$1,625
SAKO 85 HUNTER	JRS1A42	7MM WSM	SM	24 <sup>3</sup> / <sub>8</sub> "	\$1,625
SAKO 85 HUNTER	JRS1A70	7MM REM MAG	L	22 <sup>7</sup> / <sub>16</sub> "	\$1,625
SAKO 85 HUNTER	JRS1A31	300 WIN MAG	L	24 <sup>3</sup> / <sub>8</sub> "	\$1,625
SAKO 85 HUNTER	JRS1A34	338 WIN MAG	L	24 <sup>3</sup> / <sub>8</sub> "	\$1,625
SAKO 85 HUNTER	JRS1A52	7MM-08	S	22 <sup>7</sup> / <sub>16</sub> "	\$1,625
SAKO 85 HUNTER	JRS1A37	375 H&H MAG	L	24 <sup>3</sup> / <sub>8</sub> "	\$1,625

### SAKO 85 STAINLESS SYNTHETIC

MODEL	CODE	CALIBER	ACTION	BBL LENGTH	MSRP
SAKO 85 STAINLESS SYN.	JRS1B14	22-250 REM	S	22 <sup>7</sup> / <sub>16</sub> "	\$1,525
SAKO 85 STAINLESS SYN.	JRS1B15	243 WIN	S	22 <sup>7</sup> / <sub>16</sub> "	\$1,525
SAKO 85 STAINLESS SYN.	JRS1B16	308 WIN	S	22 <sup>7</sup> / <sub>16</sub> "	\$1,525
SAKO 85 STAINLESS SYN.	JRS1B43	338 FEDERAL	S	22 <sup>7</sup> / <sub>16</sub> "	\$1,525
SAKO 85 STAINLESS SYN.	JRS1B17	25-06 REM	M	22 <sup>7</sup> / <sub>8</sub> "	\$1,525
SAKO 85 STAINLESS SYN.	JRS1B18	270 WIN	M	22 <sup>7</sup> / <sub>8</sub> "	\$1,525
SAKO 85 STAINLESS SYN.	JRS1B20	30-06 SPRG	M	22 <sup>7</sup> / <sub>8</sub> "	\$1,525
SAKO 85 STAINLESS SYN.	JRS1B21	260 REM	S	22 <sup>7</sup> / <sub>16</sub> "	\$1,525
SAKO 85 STAINLESS SYN.	JRS1B40	270 WSM	SM	24 <sup>3</sup> / <sub>8</sub> "	\$1,560
SAKO 85 STAINLESS SYN.	JRS1B41	300 WSM	SM	24 <sup>3</sup> / <sub>8</sub> "	\$1,560
SAKO 85 STAINLESS SYN.	JRS1B42	7MM WSM	SM	24 <sup>3</sup> / <sub>8</sub> "	\$1,560
SAKO 85 STAINLESS SYN.	JRS1B70	7MM REM MAG	L	24 <sup>3</sup> / <sub>8</sub> "	\$1,525
SAKO 85 STAINLESS SYN.	JRS1B31	300 WIN MAG	L	24 <sup>3</sup> / <sub>8</sub> "	\$1,525
SAKO 85 STAINLESS SYN.	JRS1B34	338 WIN MAG	L	24 <sup>3</sup> / <sub>8</sub> "	\$1,525
SAKO 85 STAINLESS SYN.	JRS1B52	7MM-08	S	22 <sup>7</sup> / <sub>16</sub> "	\$1,525

# THE BIG GAME HUNTER



Best-quality custom rifles at production price. Buying a rifle is always an exciting experience. But with all the brands out there, with each manufacturer promising the moon, this experience also involves making decisions that are often tricky and difficult. We want to present you the resume of Sako rifles. Objectively. We are confident that when you are done reviewing it, you will see why Sako is regarded as a true custom rifle worth several times its price.



## SAKO QUAD HUNTER

One rifle, four barrels available to shoot 22 LR, 17 HMR. An easy barrel-switch that takes less than twenty seconds. Rimfire enthusiasts have come to appreciate the fun and the versatility given by the quick-interchangeable Quad barrel system. Now, the Sako Quad and Quad Combo are available with an attractive walnut stock that will please even the staunchest traditionalist. The stock features a tasteful but new checkering pattern that retains the "shark-gills" design typical of the Quad line. In all other respects, the Sako Quad Hunter is just as versatile and hi-tech as the Synthetic version, with its detachable magazine, adjustable trigger, and minute-of-angle accuracy.

Each barrel and magazine is color coded for easy recognition. Just match the barrel band color with the correct dot color on the magazine. As an added feature, the magazines provide a unique safety system to prevent insertion with the wrong barrel in place.



A high quality fitted aluminum case with barrel changing tool and room for a scope is supplied as standard with the Sako Quad Combo.



SAKO REQUIRES THAT EVERY RIFLE MUST FIRE A 1-INCH, 5-SHOT GROUP FROM 100 YARDS, PRIOR TO LEAVING THE FACTORY.

## SAKO QUAD HUNTER

MODEL	CODE	CALIBER	ACTION	BBL LENGTH	FINISH	MAG. CAPACITY	MSRP
SAKO QUAD HUNTER	JRSR300	22 LR		22"	WOOD/BLUED	5 ROUNDS	\$
SAKO QUAD HUNTER	JRSR301	22 WMR		22"	WOOD/BLUED	5 ROUNDS	\$
SAKO QUAD HUNTER	JRSR301	17 MACH2		22"	WOOD/BLUED	5 ROUNDS	\$
SAKO QUAD HUNTER	JRSR309	17 HMR		22"	WOOD/BLUED	5 ROUNDS	\$
SAKO QUAD HUNTER COMBO	JRSR4C1	22 LR, 22 WMR		22"	WOOD/BLUED	5 ROUNDS	\$

# THE BIG GAME HUNTER

COME RAIN OR VARMINTS  
ALWAYS AT THE READY.



## SAKO 85 FINNLIGHT

When weather is at its worst, determined hunters know there's no substitute for the combination of a stainless steel barreled action and a synthetic stock. No matter how long a downpour drenches these rifles, they'll be ready. Available in 17 calibers ranging from .22-250 to .375 H&H Mag. in four action lengths, there's a stainless Synthetic or Finnlight for almost any game, anywhere, any time. As with all of our stainless rifles. The Finnlight's inner parts are also stainless.



## SAKO 85 VARMIN'T



## SAKO 85 LAMINATED SS VARMIN'T

Because our customers live the Beretta lifestyle so passionately, they are a rich source of information and feedback on our products. Customers suggested we offer a single set trigger as standard in our Varmint line, as well as the 260 REM and the 204 Ruger calibers. We've done just that, updating our Varmint line to include a set trigger and the new calibers. The way this single set trigger works is simple. If used normally, it functions like a standard Sako trigger, adjustable for weight and pull from 2 to 4 lbs. But after you cock the bolt, you can push the trigger forward (instead of pulling it), thus "setting" it for an amazingly light 7.5 oz. pull, making it ideal for target and precision varmint shooting.

## SAKO 85 FINNLIGHT

MODEL	CODE	CALIBER	ACTION	BBL LENGTH	MSRP
SAKO 85 FINNLIGHT	JRS1Q15	243 REM	S	20 1/4"	\$1,545
SAKO 85 FINNLIGHT	JRS1Q16	308 WIN	S	20 1/4"	\$1,545
SAKO 85 FINNLIGHT	JRS1Q43	338 FEDERAL	S	20 1/4"	\$1,545
SAKO 85 FINNLIGHT	JRS1Q17	25-06 REM	M	20 7/8"	\$1,545
SAKO 85 FINNLIGHT	JRS1Q18	270 WIN	M	20 7/8"	\$1,545
SAKO 85 FINNLIGHT	JRS1Q20	30-06 SPRG	M	20 7/8"	\$1,545
SAKO 85 FINNLIGHT	JRS1Q21	260 REM	S	20 1/4"	\$1,545
SAKO 85 FINNLIGHT	JRS1Q51	6.5X55 SWEDISH MAUSER	M	24 3/8"	\$1,545
SAKO 85 FINNLIGHT	JRS2Q40	270 WSM	SM	24 3/8"	\$1,590
SAKO 85 FINNLIGHT	JRS2Q41	300 WSM	SM	24 3/8"	\$1,590
SAKO 85 FINNLIGHT	JRS2Q42	7MM WSM	SM	24 3/8"	\$1,590
SAKO 85 FINNLIGHT	JRS1Q70	7MM REM MAG	L	24 3/8"	\$1,545
SAKO 85 FINNLIGHT	JRS1Q31	300 WIN MAG	L	24 3/8"	\$1,545
SAKO 85 FINNLIGHT	JRS1Q52	7MM-08	S	20 1/4"	\$1,545

## SAKO 85 VARMIN'T SET TRIGGER

MODEL	CODE	CALIBER	ACTION	BBL LENGTH	MSRP
SAKO 85 VARMIN'T SET TRIGGER	JRSF212	243 REM	XS	23 5/8"	\$1,725
SAKO 85 VARMIN'T SET TRIGGER	JRSF214	22-250 REM	S	23 5/8"	\$1,725
SAKO 85 VARMIN'T SET TRIGGER	JRSF215	243 WIN	S	23 5/8"	\$1,725
SAKO 85 VARMIN'T SET TRIGGER	JRSF216	308 WIN	S	23 5/8"	\$1,725
SAKO 85 VARMIN'T SET TRIGGER	JRSF222	204 RUGER	XS	23 5/8"	\$1,725

## SAKO 85 VARMIN'T STAINLESS LAMINATED SET TRIGGER

MODEL	CODE	CALIBER	ACTION	BBL LENGTH	MSRP
SAKO 85 VARMIN'T STAINLESS LAMINATED SET TRIGGER	JRSG512	223 REM	XS	23 5/8"	\$1,795
SAKO 85 VARMIN'T STAINLESS LAMINATED SET TRIGGER	JRSG514	22-250 REM	S	23 5/8"	\$1,795
SAKO 85 VARMIN'T STAINLESS LAMINATED SET TRIGGER	JRSG515	243 WIN	S	23 5/8"	\$1,795
SAKO 85 VARMIN'T STAINLESS LAMINATED SET TRIGGER	JRSG516	308 WIN	S	23 5/8"	\$1,795
SAKO 85 VARMIN'T STAINLESS LAMINATED SET TRIGGER	JRSG522	204 RUGER	XS	23 5/8"	\$1,795

# THE VICTORY SHOOTER



As a competition shooter, you understand and require balance. Balance between mind and body. Balance between instinct and physics. In your world, what is innovation without reliability? Comfort without performance? For you, all of these elements must work together, balanced and in total unison. Beretta's collection for the Victory Shooter surpasses these demands ... and the results will be obvious on your scorecard. The Beretta Victory Shooter collection of shotguns, apparel, and accessories was designed with the competitive clay target shooter in mind.

## THE PINK COLLECTION



COMPETITIVE CLOTHING AND ACCESSORIES FOR WOMEN SHOOTERS.

A dash of style dresses up this collection for women, whether at the range or in the heat of competition. From the understated pink piping on the Shooting Vest to the bright splash of pink against the Beretta blue in the Team Shirt to the fit and performance, our Pink Collection is designed specifically for the woman shooter.

[WWW.SHOPBERETTA.COM](http://WWW.SHOPBERETTA.COM)

# THE VICTORY SHOOTER

CHOOSE YOUR  
POINT OF IMPACT.



## 682 GOLD E TRAP UNSINGLE

Beretta is proud to introduce the 682 Gold ETrap Unsingled version to further complete the 682 E family of products. Designed specifically for the American Trap market, this model features a fully adjustable unsingled rib. The unsingled version only (non-combo) will be available solely with the 34" barrel with adjustable rib. Two combo versions will also be available: a 34" adjustable unsingled with a 30" over/under, and a 34" adjustable unsingled barrel with 32" over/under. All models will be equipped with a factory adjustable comb with Memory System, and the same adjustable trigger shoe that is standard on the 682 Gold E Trap family.

The 682 E family has been established as a premier firearm in competition shooting, building on a tradition of durability, reliability, and performance. With the elliptical graphic on the low profile receiver, and nickel alloy steel for strength and durability, this family is the perfect blend between technology and style, heritage and innovation.



## FULLY ADJUSTABLE RIB

The 682 Gold ETrap Unsingled's fully adjustable rib allows the shooter to change the point of impact, making the gun truly customizable to suit the individual shooters' needs.



## 682 GOLD E TRAP UNSINGLE

MODEL	CODE	GAUGE	BARREL	CHOKE	MSRP
682 GOLD E TRAP UNSINGLE	J682E25	12	34"	OBTR	\$4,425
682 GOLD E TRAP UNSINGLE COMBO	J682E20	12	30"/34"	OBTR	\$5,975
682 GOLD E TRAP UNSINGLE COMBO	J682E22	12	32"/34"	OBTR	\$5,975

# THE VICTORY SHOOTER

KEEPING YOUR AIM  
ON TARGET.



## 3901 TARGET RL

Beretta is expanding its current offering of 3901 shotguns to include the Target RL model. This shotgun is specifically designed for the needs of smaller stature shooters. The 3901 Target RL is the ideal first shotgun for new shooters, youth, and women who desire to shoot 12-gauge, but require the additional benefit of a gas operating system to reduce recoil. This 12-gauge, 3-inch, chambered, semiautomatic comes in both 26-inch and 28-inch barrel lengths. The barrel comes equipped with a Sporting style flat rib with white front bead and mid-bead. The standard walnut stock and forearm are finished in a satin matte finish. The gun has an adjustable length of pull from 12 to 13 inches. The stock is also adjustable for cast on/off and comes equipped with Beretta's Memory System II™ to adjust the parallel comb. Through the use of supplied magazine plugs, the capacity of the gun can be configured to a single shot if so desired for teaching applications.



## AL391 TEKNYS GOLD TARGET

The AL391 Teknys Gold is Beretta's ultimate field autoloader. With an added suite of features, it becomes the AL391 Teknys Gold Target, the ultimate autoloader for sporting clays, skeet, and trap. You'll pick it out instantly. The receiver is distinctively engraved with a stylized Beretta logo on the left side, and both sides feature blue enameled inserts that unite the receiver and buttstock in a stylistic look that distinguishes the Target model from the green-enameled field gun. The self-compensating gas operating system regulates ammunition of varying ballistics, and has been thoroughly proven in the successful AL391 Urika series. Fitted in the buttstock of every Teknys Gold Target shotgun is an 8.5-ounce recoil reducer based on the spring-mass system pioneered in the original 31/2 inch, 12-gauge Xtrema. If reduced weight is required by the shooter, the system is easily removed without the need of a gunsmith. Those who want to keep a forward balance and add weight can opt to use the supplied magazine cap weight/balance system. Through the use of secure interchangeable ribs, one truly has the ultimate "do-it-all" Target gun for trap, skeet, and sporting clays. The inclusion of an additional stepped rib provides one the opportunity to have a second sight picture for trap targets.

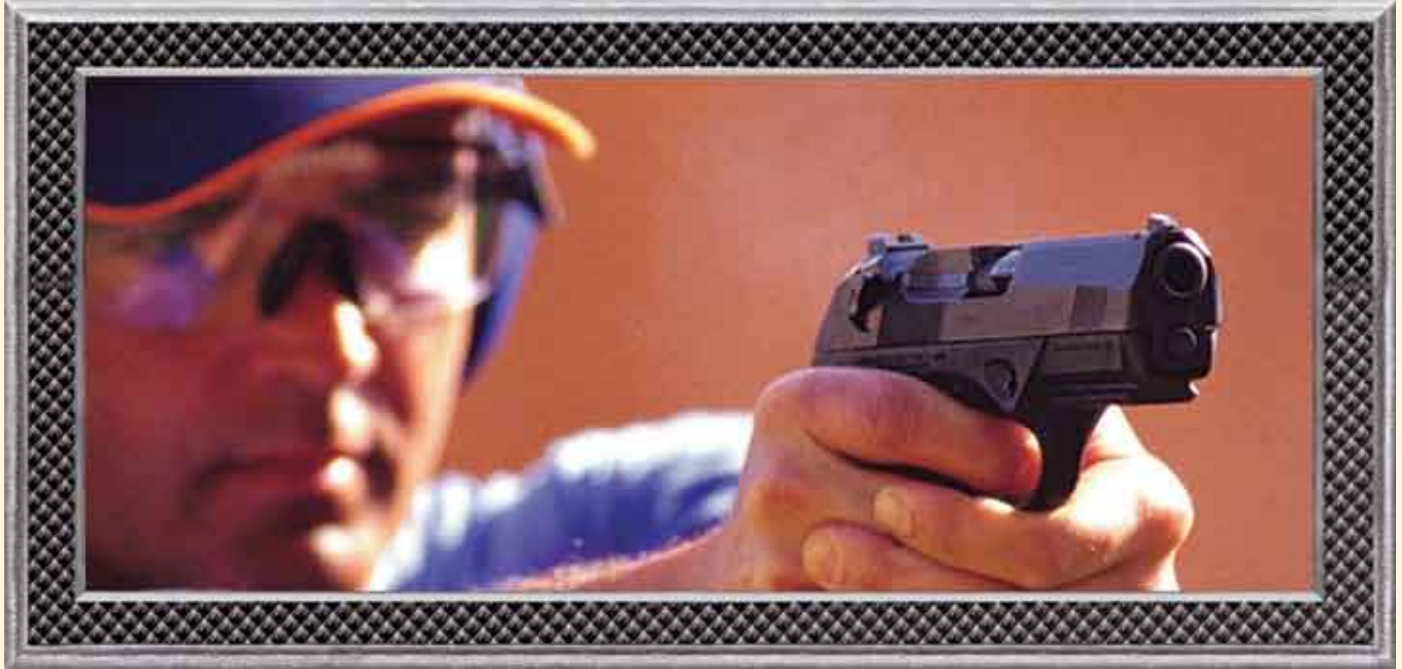
## 3901 TARGET RL

MODEL	CODE	GAUGE	BARREL	CHOKE	MSRP
3901 TARGET RL	J390Y16	12	26"	MCI	\$900
3901 TARGET RL	J390Y18	12	28"	MCI	\$900

## AL391 TEKNYS GOLD TARGET

MODEL	CODE	GAUGE	BARREL	CHOKE	MSRP
AL391 TEKNYS TARGET	J391T00	12	30"	OBS	\$2100

# THE AMERICAN PISTOL SHOOTER



As a pistol shooter, you naturally expect certain things from your firearm such as absolute reliability and consistent accuracy. As a Beretta American Pistol Shooter, you can also expect innovation, versatility, safety, and superior design and workmanship — Along with our ongoing commitment to bring you a comprehensive array of products to suit your needs. The Beretta American Pistol Shooter collection offers products for personal or home defense, recreational use, and competitive shooting.

## MAXIMUM FIREPOWER.



### PX4 STORM .45 SD

The new Beretta Px4 Storm .45 Special Duty pistol is the most advanced sidearm of its kind, bar none. Designed to meet the rigorous specifications of S.O.C.O.M. The Px4 Storm .45 SD provides maximum firepower in any environmental and special duty situation.

Built around Beretta's latest Px4 Storm modular technology, the Px4 Storm .45 SD includes the same features as the standard .45 along with various materials and finishes capable of withstanding the toughest military applications.

### SPECIAL DUTY FEATURES

An optimal grip angle ensures a correct line of sight and contoured to snugly fit the shooter's hand. Part of a newly patented modular system, the pistol adapts to different hand sizes easily with interchangeable Backstraps (included). An ambidextrous manual safety lever is positioned on both sides of the slide for easy access by all shooters. A reversible magazine release button can be mounted on either side and can quickly be replaced by a smaller and larger sized button (optional). An interchangeable slide catch can also be replaced with an optional low profile configuration. A standard Picatinny Rail (MIL-STD-1913) allows for an array of aftermarket accessories. Caliber: .45 ACP. Magazine Capacity: 10 rounds, staggered. Sights: 3-dot dovetail with SuperLuminova.



### PX4 STORM .45

Just like the SD, the new Px4 Storm .45 pistol is built around Beretta's latest Px4 modular technology that offers individualized performance. Featuring an innovative locked breech rotating barrel system, the Px4 Storm .45 pistols have the strongest action ever developed by Beretta's engineering dream team.



# THE AMERICAN PISTOL SHOOTER

SMALL IN SIZE.  
BIG IN PUNCH.

## PX4 STORM SUB-COMPACT

The Beretta Px4 Storm Sub-Compact pistol is the most advanced sub-compact sidearm of its kind. Built around Beretta's latest Px4 modular technology, the Px4 Storm Sub-Compact delivers concealed carry handling with large frame firepower.

Available in two calibers (9 mm and .40 S&W), the Px4 Storm Sub-Compact uses a very reliable locked breech and tilt barrel system, providing a more compact and lighter weight system. A stainless steel barrel requires less maintenance and is corrosion resistant, perfectly suited for concealment close to active, perspiring bodies.



No tools are required to replace the interchangeable back strap and create an individualized fit for the user.

An optimal grip angle ensures a correct line of sight and contoured to snugly fit the shooter's hand. Part of a newly patented modular system, the pistol adapts to different hand sizes easily with interchangeable Backstraps (included). An ambidextrous manual safety lever is positioned on both sides of the slide for easy access by all shooters. A reversible magazine release button can be mounted on either side and can quickly be replaced by a smaller and larger sized button (optional). An interchangeable slide catch can also be replaced with an optional low profile configuration. A standard Picatinny Rail (MIL-STD-1913) allows for an array of aftermarket accessories.

Patented SnapGrip™ Magazine Extender: Beretta's patented SnapGrip Magazine Extender flips down easily, maximizing the grip for larger hands.

## PX4 STORM SUB-COMPACT

MODEL	CODE	CALIBER	MAG. CAPACITY	MSRP
PX4 STORM SUB COMPACT 9MM	JXS9F21	9MM	13 ROUNDS	\$575
PX4 STORM SUB COMPACT 40 S&W	JXS4F20	40 S&W	10 ROUNDS	\$575

## PX4 STORM .45

MODEL	CODE	CALIBER	MAG. CAPACITY	MSRP
PX4 STORM .45	JXF5F25	45 ACP	10 ROUNDS	\$625
PX4 STORM .45 SD	JXF5F45	45 ACP	10 ROUNDS	\$ 1,095

# THE AMERICAN PISTOL SHOOTER

THE MOST ADVANCED RIFLE  
EVER DESIGNED.



## RX4 STORM RIFLE

The Beretta Rx4 Storm is the most advanced semi-automatic rifle ever designed for commercial and law enforcement use. This .223 special purpose rifle emphasizes individual performance with multiple stock configurations, ergonomic adjustment and ambidextrous controls.

Designed in a joint effort by Beretta and Benelli engineers, the Rx4 Storm incorporates the most advanced technology in firearms. Using the ARGO (Auto Regulating Gas Operating) system, the gas port is located just forward of the chamber where the gases are hotter and cleaner, resulting in less fouling and more reliable cycling.

## CUSTOMIZE TO FIT YOUR SHOOTING STYLE

The Rx4 comes standard with a reversible cross bolt safety and ambidextrous bolt release. Unlike some other weapon systems, the magazine release button is reversible and may be operated from either side.

The Rx4 is sold with two stock configurations and a third fixed, pistol grip stock is available as an accessory. A collapsible, five-position telescoping stock allows the operator to adjust the length of pull for size, stature and for law enforcement body armor. A "Sporter"-style stock version offers a more traditional feel for recreational shooters. Included are ghost ring sights with protective ears adjustable for windage and elevation.

Both versions are sold with a 10-round magazine, plugged to five and will also accept optional 30-round magazines.

Additional features add to the Rx4 Storm's versatility, featuring nine sling attachment points for multiple carry options, making it more individualized than your typical rifle. Its technopolymer design simplifies disassembly and does not require tools.



5-position collapsible stock (shown fully collapsed)



Optional Fixed Pistol Grip stock (Sold as Accessory)

## RX4 STORM RIFLE\*

MODEL	CODE	ACTION	SIGHTS	CALIBER	MAG. CAPACITY
RX4 STORM	JXRC521	SEMI-AUTO	GHOST RING	.223 REM	10 ROUNDS, PLUGGED TO 5
RX4 STORM	JXRS521	SEMI-AUTO	GHOST RING	.223 REM	10 ROUNDS, PLUGGED TO 5

\*Final MSRP pricing pending. Actual model configurations subject to change.

# THE WESTERN SHOOTER



To the Western Shooter, authenticity is what matters above everything else. However, at Beretta we feel that even authenticity should not detract from flawless performance. This is why you'll find an extraordinary combination of both in our lineup of Old-West firearms. These fine firearms are for the Western Shooter who demands absolute truthfulness to the 19th-Century originals as far as dimensions, feel and functioning, coupled with Beretta-style reliability, safety and performance.

## THIS BAD BOY WAS BORN TO SHOOT.



### STAMPEDE, OLD WEST & OLD WEST MARSHALL

Beretta is proud to offer its Stampede in a new Old West finish, reminiscent of today's most sought after collector pieces. But make no mistake; Beretta's new Old West finish is as tough and corrosion resistant as any modern firearm. Although they make great collector pieces, these bad boys were born to shoot, perfect for cowboy action shooting, target shooting and close range hunting.

### STAMPEDES

MODEL	CODE	BARREL	CALIBER	MSRP
STAMPEDE OLD WEST	JEJ1401	43/4"	.45LC	\$600
STAMPEDE OLD WEST	JEJ1501	51/2"	.45LC	\$600
STAMPEDE OLD WEST MARSHALL	JEJ1301	31/2"	.45LC	\$625

WWW.SHOPBERETTA.COM

# THE WESTERN SHOOTER

JUST LIKE THE BOOTS ON HIS FEET, A COWBOY KNOWS  
GOOD THINGS COME IN TWOS.



## STAMPEDE PHILIDELPHIA, MATCHED PAIR

Any cowboy would be proud to fill his holster with these matching Stampedes. Inspired by the limited edition Philadelphia Centennial engraving (1876), this matched pair is laser engraved then hand finished on the receiver cylinder and barrel. The walnut grips feature checkering and inlaid gold Beretta medallions. Gold-filled "1" and "2" on top of backstrap, paired serial numbers. 5 ½ barrel. Caliber: .45IC.



## STAMPEDE GEMINI, MATCHED PAIR

This handsome matching pair of Stampedes features German Silver trigger guards and backstraps. The wood grips are hand-rubbed, oil finished and fitted with a gold Beretta medallion. In addition to matching paired serial numbers, Beretta has stamped the "UGB" inspector cartouche on the outside panel of each grip. These stamps match the side of the serial number prefix. Optional custom fitted deluxe wood case sold separately. 5 1/2" barrels. Caliber: .45 IC.

# THE WESTERN SHOOTER

HOW THE WEST WAS WON  
BATTLE-TESTED.



## STAMPEDE, BUNTLINE CARBINE (BLUED)

In 1873, it is said that dime novelist Ned Buntline presented Colt revolvers with shoulder stocks to the most famous men of the Old West including lawmen Wyatt Earp and Bat Masterson. The Buntline revolver was one of the first reliable repeating rifles, battle-tested in the Mexican War as well as Indian Wars of the Southwest.

The new Beretta Stampede Buntline revolver is a true working replica of the famous Buntline, featuring the same great performance and reliability as Beretta Stampede revolvers, including the innovative transfer bar safety, which allows the revolver to be safely loaded with six cartridges rather than five and an open chamber. Hooked trigger guard, 18" barrel, brass crescent butt plate, checkered stock, inlaid gold Beretta medallion on both sides.



## STAMPEDES

MODEL	CODE	BARREL	CALIBER	MSRP
STAMPEDE BUNTLINE	JEH1801	18	.45 LC	\$850
STAMPEDE GEMINI, MATCHED PAIR	JEG4501R/JEG4501L	5 1/2"	.45 LC	\$1,325/PAIR (\$662.50 EACH)
STAMPEDE PHILADELPHIA, MATCHED PAIR	JEG3501B/JEG3502B		.45 LC	\$2,060/PAIR (\$1,030 EACH)

# THE 1526 CLIENT



What is beauty without performance? What is performance without beauty? One cannot stand without the other. Not for you. And nowhere is this more evident than in the collection for our 1526 Client. There is, quite simply, no finer example of Beretta's heritage of unflagging dedication to extraordinary performance and outstanding quality than in this collection, which is enveloped in the Italian sense of craftsmanship and style unrivaled worldwide.

## BERETTA PREMIUM GRADE GUNS — MASTERPIECES OF THE GUNMAKER'S ART.

### PREMIUM GRADE GUNS

The best of the best. From the rich baroque spirals hand chiseled by Master Engravers on the splendid Giubileo over-and under to aesthetic refinement, function and performance of the SO10, Beretta's Premium Grade Guns are unrivaled. Every one is hand fitted, hand engraved, and fashioned from hand selected wood. There is sheer beauty in every luxurious detail of these masterpiece works which combine ability, invention and artisan mastery, jealously handed down through almost five centuries of history. These prestigious shotguns are the rewards of a life well lived and a testament to the extraordinary performance and outstanding quality that defines Beretta.



SO10



GIUBILEO

Contact a Beretta Authorized Premium Gun Dealer for models, availability, and pricing.



17601 Beretta Drive  
Accokeek, MD 20607  
800-BERETTA (800-237-3882)

[WWW.BERETTA.COM](http://WWW.BERETTA.COM)